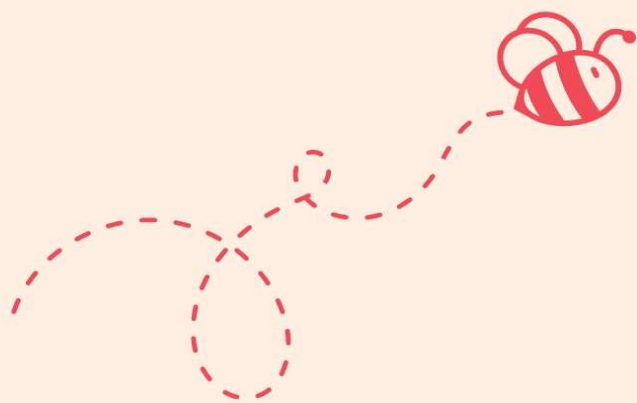
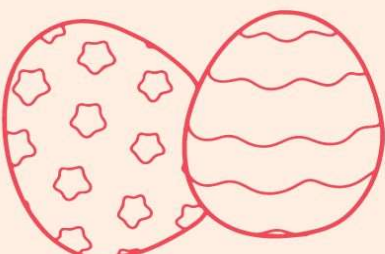


# SPRING

*into*

# APRIL

## *Horse Show*



**APRIL 14, 2024**

USEF REGIONAL 1  
PHA RATED "B"

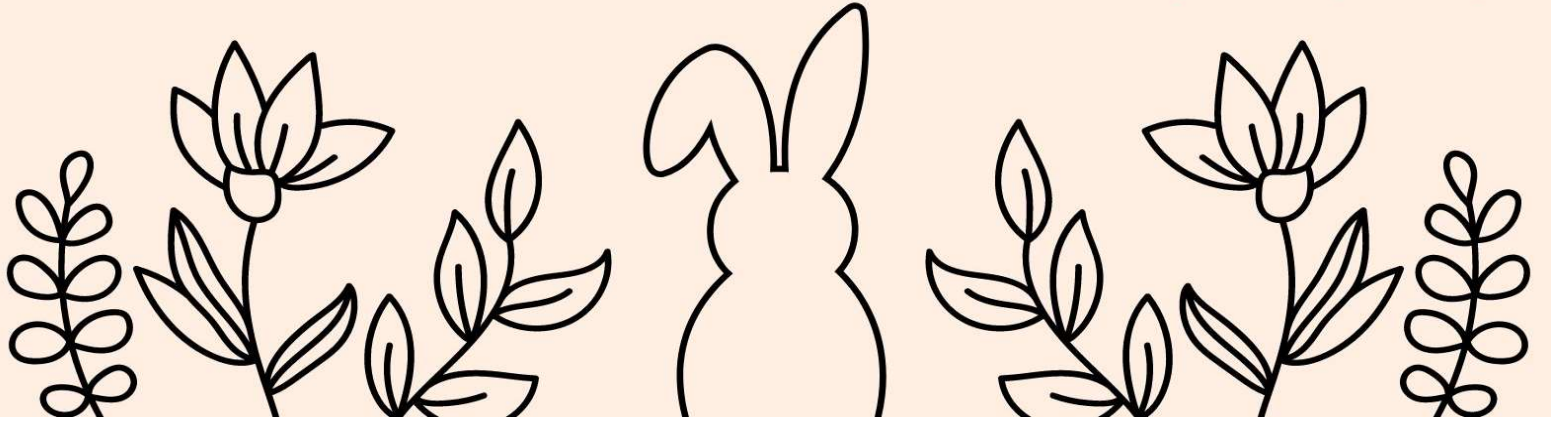
**APRIL 13, 2024**

NOT USEF RATED  
PHA RATED "B"

**Lehman Farms**

**161 South Wilmarth Road  
Pittsford NY, 14534**

[www.syracusepha.org](http://www.syracusepha.org)



# Spring into April

## ***USEF Regional Rated***

Sunday, April 14, 2024

## ***Unrated Classes***

Saturday, April 13, 2024

## **OFFICIALS**

**Judge** - Penny Kinnally

**Manager & Secretary** - Elizabeth Pinto

**Technical Coordinator** - Nicholas Tighe

**Veterinarian** - Genessee Valley Equine On - *Call 585.889.1170*

**Steward** - Tracy Percival

**Course Designer** - Gail Miller

**Farrier** - Mike Brewer - *On Call 585-314-6413*

## **Official Measurements will be done at 9 AM Sunday**

Please Advise **GAIL** or **LIZ** By **Noon Friday** If You Have A Horse Or Pony To Measure

## **FOR STALL RESERVATIONS CONTACT:**

Gail Miller: 585.721.9415

## **Directions:**

**From The West:** Use Exit 46 from Rt 90. Take Rt. 390 North to Lehigh Station Road. Turn right. Follow to Clover St, Rt 65, & turn right onto Clover. Take the 1st left after crossing over Rt 90 onto Canfield Road. Take the 1st left onto So. Wilmarth Road and follow to end to Lehman Farms.

**From The East:** Use Exit 45 from Rt 90. Take Rt. 490 to Bushnell's Basin. Turn right onto Rt 96, left onto Thornell Road, left onto West Bloomfield Road, cross over Rt 90 and immediately turn right onto Canfield Road. Go straight into Mendon Ponds, turn right onto South Wilmarth Road.

**161 South Wilmarth Road, Pittsford NY, 14534**

# 2024 Syracuse PHA Horse Show Dates

## Lehman Farms December

December 9-10

## Lehman Farms January

January 13-14

## Lehman Farm February

February 3-4

## Lehman Farms March

March 16-17

## Spring Into April

April 13-14

## Syracuse PHA

April 25-28

## Saratoga I

May 2-5

## Saratoga II

May 9-12

## Saratoga III

May 16-19

## Lehman Farms June

June 7-8

## June at Lehman Farms

9-Jun

## Saratoga Classic I

June 12-16

## State College Classic

June 26-30

## Mt. Nittany

July 1-2

## Lion Country

July 3-7

## Huck Finn

July 13-14

## Mark Twain Festival

July 17-18

## Chemung County Classic

July 19-21

## August In Rochester

August 10-11

## Lehman Farms August

12-Aug

## Saratoga Summer

August 14-18

## Buffalo International

September 12-15

## Autumn In NY

September 26-29

## Lehman Farms November

November 9-10



# SYRACUSE CHAPTER P.H.A. 2024 HIGH SCORE AWARDS

## Awards to be made in the following divisions:

.95m & Lower Jumpers	Green Hunters 3' & 3'3"
1.00 to 1.05m Jumpers	Green Hunters 3'6" & 3'9"
1.10m & Higher Jumpers	Thoroughbred Hunters
Amateur Owner Hunters	Junior Hunters
Adult-Am Hunters 18-35	Junior Jumpers .95-1M
Adult-Am Hunters 36&O	Low Adult Hunters
Amateur Jumpers 95-1M	Low Children's Pony Hunter
Baby Green Hunters	Low Children's Hunters
Children's Hunters 14 & U	2' Jr/Am Hunter
Children's Hunters 15-17	Performance Hunter
Children's Large Pony Hunters	Pony Hunters
Children's Small/Medium Pony Hunters	Short Stirrup Hunters
Green Pony Hunter	USHJA 3' Hunters
	USHJA 2'9" Hunters

## RULES GOVERNING THE AWARDS

To be eligible for High Score Awards, all horses and ponies must be nominated and the person(s) in whose name(s) the horse or pony is showing, or the child who is showing in horsemanship classes, must be a current member of the Syracuse Chapter PHA. No points will count towards the High Score Awards until after the dues and nominations are received by the PHA Secretary. **THE SYRACUSE PHA MEDAL EQUITATION CLASSES** Unless noted otherwise, all classes to be shown over a course of not less than 6 obstacles, which may include one combination including an oxer and one change of direction. Fences for Junior Hunter Riders 3'6" &/or 3'3"; fences for Children's Hunters Horses and Adult Riders 3'; fences for Children's Hunters Large Ponies 2'6", Small-Medium Ponies 2', Low-Child & Low-Adult Horses 2'6", Low-Child Ponies 2'. Medal Class USEF Tests for Jr Hunter Riders 1-22; All others. Testing is optional in all classes and/or the Judge may elect to include one or more tests in the original course. Every Member show is required to offer a Jr, Children's & Adult PHA Medal Class if they offer the corresponding Hunter Divisions. Other medals are optional. Management may offer a separate class for riders of Children's Hunter Ponies and/or Pre-Children's Ponies. Horses and riders showing in the Junior Hunter Division, may not enter the Children's Medal at the same show. Children's Pony riders may enter the USEF Pony Medal **Additional rules explained in the current Syracuse PHA Rule Book.**

GREEN HUNTERS - Use USEF Rule HU131

Syracuse PHA will follow the USEF rules for the Green Hunters 3' & 3'3" sections.

LOW ADULT & LOW CHILDREN'S HUNTERS will follow the the USHJA Zone 2 Specifications.

[2024 Zone 2 Specifications FINAL.pdf \(ushja.org\)](https://www.ushja.org/2024-Zone-2-Specifications-FINAL.pdf)

USEF Competition Name: Spring into April

USEF#: 323524

Competition Division(s) and Rating(s):

**Regional**



# MAAPP

## MINOR ATHLETE ABUSE PREVENTION

### LEARN ABOUT MAAP POLICIES



Safe Sport Training



Local Travel



One-On-One Interactions



Social Media & Electronic Communications



Read about these & more at [usef.org/MAAPP](https://usef.org/MAAPP)

### REPORT MAAP POLICY VIOLATIONS



[usef.org/safe-sport/reporting](https://usef.org/safe-sport/reporting)

859-225-6915 or Text Anonymously 855-682-8733





# Learn. Compete. Belong.

JOIN OUR COMMUNITY AT [USHJA .ORG/MEMBERSHIP](https://www.usnja.org/membership)



# GENERAL INFORMATION

- Every class offered herein which is covered by the rules and specifications of the current USEF Rule Book will be conducted and judged in accordance therewith.
- All prizemoney will be paid in the show office or credited to the exhibitor's bill.
- No person shall be allowed to ride in an Amateur Class who does not have a current USEF amateur certification or complete the appropriate paper work to apply for one in the show office. All Pony, Junior, Children's Pony Hunters & Low Ponies must show current measurement cards or be measured at the show.
- Management reserves the right to change the order of classes before or during the show and to combine or cancel classes or divisions with fewer than four entries.
- STABLING: Limited Stabling Is Available at Lehman Farms. Stall Fees: \$90.00 for the weekend for permanent box stalls (10'x12') with doors with dirt floors. **FOR STALL RESERVATIONS:** Contact Gail Miller 585-721-9415. Straw Bedding Included
- There will be a \$100.00 surcharge added to all checks returned by the bank. A billing charge of \$50.00 will be added to all accounts not settled in full at the show. The indoor show ring is approximately 80' X 225'. Indoor Schooling 66' X 199'. Both have sand footing.
- Lehman Farms and the show manager take no responsibility for loss, injury or damage to horses, exhibitors, equipment and anyone connected there to.
- Each horse/rider is responsible for paying a \$35.00 EMT/Insurance Fee.
- Schooling will be available the afternoon prior to the first day of the show for horses entering the show. A \$45.00 schooling fee will be charged if no entry is made.
- Full payment or a signed check must be left with the secretary before numbers are issued.
- \$3870 Prize Money is offered. In 2023 Spring into April paid \$180.00 in prize money
- Per HJ106.2 . All entered horses in the schooling area or warm-up area must have its show number attached to the horse or the individual riding or handling. Any horse without its correct number will be asked to leave the area.
- Unrated Entries can be submitted by texting the horse's name, owner trainer and rider names and class numbers to Liz Pinto at 973.479.1393.
- Sunday Entry blanks may be emailed/texted or hand delivered to the show office
- Entries can be emailed by scanning or photographing to eqpmliz@gmail.com.
- Adds and scratches can be texted to 973.479.1393. Please include your horse's name and back #, rider and class #s.
- Braiding is optional in all classes. No conformation in pony divisions.
- In Rated classes, you must trot a circle on a loose rein for the jog.
- On show days schooling will be controlled if necessary and courtesy circles will be limited and or the dotted linen rule will be in effect.
- The Closest Level 1 Trauma center is: Strong Memorial Hospital 601 Elmwood Avenue Rochester, NY 14642

- The closest hospital is: Monroe Community Hospital, 435 E Henrietta Rd Rochester, NY 14620

- Minors who do not have a valid driver's license which allows them to operate a motorized vehicle in the state in which they reside will not be permitted to operate a motorized vehicle of any kind, including, but not limited to, golf carts, motorcycles, scooters, or farm utility vehicles, on the competition grounds of licensed competitions. Minors who have a valid temporary license may operate the above described motorized vehicles as long as they are accompanied by an adult with a valid driver's license. The parent/legal guardian or individual who signs the entry blank as a parent or guardian of a minor operating a motorized vehicle in violation of this rule are solely responsible for any damages, claims, losses or actions resulting from that operation. Violations of this rule will be cause for penalties against those responsible for the child committing the offense. Wheelchairs and other mobility assistance devices for individuals with disabilities are exempt from this rule. The unsafe use of personal electronic transport devices, as determined by the competition officials and management in their sole discretion, that do not require a driver's license to operate, including but not limited to segways, hover boards, and single wheeled scooters is prohibited on competition grounds. Operating such devices in areas where people gather may be deemed "unsafe use" if there is a risk of harm to others. If the operator of the device is a minor, the parent/legal guardian or individual who signs the entry blank as a parent or guardian of a minor operating the device in violation of this rule is accountable and may be subject to penalties. Wheelchairs and other mobility assistance devices for individuals with disabilities are exempt from this rule.

- Life, senior active and junior active members shall be eligible to participate in all classes at Regular Competitions, Eventing Competitions at the Modified Level or above and Combined Driving Competitions at the Advanced Level, Dressage, Reining and Vaulting Competitions and Endurance Rides. A non-member may participate as a handler, rider, driver, owner, lessee, or agent at Regular Competitions, Eventing Competitions, Dressage Competitions, Reining Competitions and Combined Driving Competitions upon payment of a Show Pass fee. Participants in the following classes are exempted from the Requirements of this rule: 1) leadline; 2) exhibitions; 3) games and races; 4) classes for 4-H members; 5) walk trot and academy classes (academy classes are classes limited to horses used regularly in a lesson program); 6) USDF introductory level tests, pas de deux and quadrille classes; 7) assistant handlers in Dressage Sport Horse Breeding classes

- If you are not feeling well, we will appreciate it if you stay home. We appreciate your support but we want everyone to stay healthy.

- Covid 19 Mask Policy - Please refer to the current Monroe County Mask Mandate/Policy.



# HUNTER SECTIONS

Trophy or Prize Money & Eight Ribbons

Entry Fees: All Unrated Classes: \$35.00

All PHA/USEF Rated Classes: \$40.00

## BABY GREEN HUNTER

Open to horses and ponies in their 1st year of showing that have not shown over fences that exceed 2'3". Fences not to exceed 2'6"

1. Baby Green Hunter Over Fences
2. Baby Green Hunter Over Fences
3. Baby Green Hunter Over Fences
4. Baby Green Hunter Under Saddle

## USHJA 3' HUNTER

Open to all horses and riders. Fences 3'

5. USHJA 3' Hunter Over Fences
6. USHJA 3' Hunter Over Fences
7. USHJA 3' Hunter Over Fences
8. USHJA 3' Hunter Under Saddle

## GREEN HUNTER GREEN HUNTER

9. Green Hunter Over Fences

10. Green Hunter Over Fences

11. Green Hunter Over Fences

12. Green Hunter Under Saddle

3' & 3'3" Please Specify: Section A - 3' Section B - 3'3"

## USHJA 2'9" HUNTER

Open to all horses and riders. Fences 2'9"

13. USHJA 2'9" Hunter

14. USHJA 2'9" Hunter

15. USHJA 2'9" Hunter

16. USHJA 2'9" Hunter Under Saddle

## USHJA 2'6" HUNTER

Open to all horses and riders. Fences 2'6"

17. USHJA 2'6" Hunter

18. USHJA 2'6" Hunter

19. USHJA 2'6" Hunter

20. USHJA 2'6" Hunter Under Saddle

## USHJA 2'3" HUNTER

Open to all horses and riders. Fences 2'3"

21. USHJA 2'3" Hunter

22. USHJA 2'3" Hunter

23. USHJA 2'3" Hunter

24. USHJA 2'3" Hunter Under Saddle

## USHJA 2' HUNTER

Open to all horses and riders. Fences 2'

25. USHJA 2' Hunter

26. USHJA 2' Hunter

27. USHJA 2' Hunter

28. USHJA 2' Hunter Under Saddle

## JUNIOR HUNTER

Over Fences Classes - \$35, \$25, \$20, \$10

29. Large Junior Hunter 3'6"

30. Large Junior Hunter 3'6"

31. Large Junior Hunter 3'6" \*Handy

32. Large Junior Hunter 3'6" Under Saddle

33. Small Junior Hunter 3'6"

34. Small Junior Hunter 3'6"

35. Small Junior Hunter 3'6" \*Handy

36. Small Junior Hunter 3'6" Under Saddle

37. Large Junior Hunter 3'3"

38. Large Junior Hunter 3'3"

39. Large Junior Hunter 3'3" \*Handy

40. Large Junior Hunter 3'3" Under Saddle

41. Small Junior Hunter 3'3"

42. Small Junior Hunter 3'3"

43. Small Junior Hunter 3'3" \*Handy

44. Small Junior Hunter 3'3" Under Saddle

## 3'3" AMATEUR-OWNER HUNTER

Over Fences Classes - \$35, \$25, \$20, \$10

45. 3'3" Amateur-Owner Hunter Over Fences

46. 3'3" Amateur-Owner Hunter Over Fences

47. 3'3" Amateur-Owner Hunter Over Fences \*Handy

48. 3'3" Amateur-Owner Hunter Under Saddle

## 3'6" AMATEUR-OWNER HUNTER

Over Fences Classes - \$35, \$25, \$20, \$10

49. 3'6" Amateur-Owner Hunter Over Fences

50. 3'6" Amateur-Owner Hunter Over Fences

51. 3'6" Amateur-Owner Hunter Over Fences \*Handy

52. 3'6" Amateur-Owner Hunter Under Saddle

## ADULT-AMATEUR HUNTER 18-35

Over Fences Classes - \$25, \$15, \$10, \$5

53. Adult-Amateur Hunter Over Fences - 18-35

54. Adult-Amateur Hunter Over Fences - 18-35

56. Adult-Amateur Hunter Over Fences - 18-35

57. Adult-Amateur Hunter Under Saddle - 18-35

## ADULT-AMATEUR HUNTER 36 & OVER

Over Fences Classes - \$25, \$15, \$10, \$5

58. Adult-Amateur Hunter Over Fences - 36 & Over

59. Adult-Amateur Hunter Over Fences - 36 & Over

60. Adult-Amateur Hunter Over Fences - 36 & Over

61. Adult-Amateur Hunter Under Saddle - 18-35

### **CHILDREN'S HUNTER HORSES - 14 & UNDER**

- Over Fences Classes - \$25, \$15, \$10, \$5  
62. Children's Hunter Over Fences - 14 & Under  
63. Children's Hunter Over Fences - 14 & Under  
64. Children's Hunter Over Fences - 14 & Under  
65. Children's Hunter Under Saddle - 14 & Under

### **CHILDREN'S HUNTER HORSES - 15-17**

- Over Fences Classes - \$25, \$15, \$10, \$5  
66. Children's Hunter Over Fences - 15-17  
67. Children's Hunter Over Fences - 15-17  
68. Children's Hunter Over Fences - 15-17  
69. Children's Hunter Under Saddle - 15-17

### **CHILDREN'S HUNTER PONY - SMALL/MEDIUM**

- Over Fences Classes - \$25, \$15, \$10, \$5 • Fences 2'  
70. Children's Hunter Small/Med Pony Over Fences  
71. Children's Hunter Small/Med Pony Over Fences  
72. Children's Hunter Small/Med Pony Over Fences  
73. Children's Hunter Small/Med Pony Under Saddle

### **CHILDREN'S HUNTER PONY - LARGE**

- Over Fences Classes - \$25, \$15, \$10, \$5 • Fences 2'  
74. Children's Hunter Large Pony Over Fences  
75. Children's Hunter Large Pony Over Fences  
76. Children's Hunter Large Pony Over Fences  
77. Children's Hunter Large Pony Under Saddle

### **SMALL PONY HUNTER**

- Over Fences Classes - \$35, \$25, \$20, \$10  
78. Small Pony Hunter Over Fences  
79. Small Pony Hunter Over Fences  
80. Small Pony Hunter Over Fences \*Handy  
81. Small Pony Hunter Under Saddle

### **MEDIUM PONY HUNTER**

- Over Fences Classes - \$35, \$25, \$20, \$10  
82. Medium Pony Hunter Over Fences  
83. Medium Pony Hunter Over Fences  
84. Medium Pony Hunter Over Fences \*Handy  
85. Medium Pony Hunter Under Saddle

### **LARGE PONY HUNTER**

- Over Fences Classes - \$35, \$25, \$20, \$10  
86. Large Pony Hunter Over Fences  
87. Large Pony Hunter Over Fences  
88. Large Pony Hunter Over Fences \*Handy  
89. Large Pony Hunter Under Saddle

### **GREEN PONY HUNTER**

- Over Fences Classes - \$35, \$25, \$20, \$10  
90. Green Pony Hunter Over Fences  
91. Green Pony Hunter Over Fences  
92. Green Pony Hunter Over Fences  
93. Green Pony Hunter Under Saddle

**Section A - Small/Medium, Section B - Large**

### **PERFORMANCE HUNTER 3'3"**

- Over Fences Classes: \$35, \$25, \$20, \$10  
94. Performance Hunter 3'3" Over Fences  
95. Performance Hunter 3'3" Over Fences  
96. Performance Hunter 3'3" Over Fences  
97. Performance Hunter 3'3" Under Saddle

### **THOROUGHBRED HUNTER**

- Fences 3'  
98. Thoroughbred Hunter Over Fences  
99. Thoroughbred Hunter Over Fences  
100. Thoroughbred Hunter Over Fences  
101. Thoroughbred Hunter Under Saddle

### **LOW CHILDREN'S HUNTER HORSES**

Eligibility: Open to exhibitors who have not yet reached their 18th birthday as of December 1 of the current competition year. Cross Entry: Riders: Riders may not cross enter at the same competition into the Children's Hunter, Pony Hunter or any class/section where fences exceed 2'9" Fence Height: • 2'6"

102. Low Childrens Hunter Horses Over Fences  
103. Low Childrens Hunter Horses Over Fences  
104. Low Childrens Hunter Horses Over Fences  
105. Low Childrens Hunter Horses Under Saddle

### **LOW CHILDREN'S PONY HUNTER**

Eligibility: Open to exhibitors who have not yet reached their 18th birthday as of December 1 of the current competition year. Cross Entry: Riders: Low Pony Hunter riders may not cross enter into any class where fences exceed 2'9" or into the Children's Hunter Pony, Pony Hunter, or Green Pony Hunter Section at the same competition. Not to Jog. Fence Height: • 2'

106. Low Childrens Hunter Pony Over Fences  
107. Low Childrens Hunter Pony Over Fences  
108. Low Childrens Hunter Pony Over Fences  
109. Low Childrens Hunter Pony Under Saddle

### **LOW ADULT AMATEUR HUNTER**

Eligibility: Open to exhibitors who have reached their 18th birthday as of December 1 of the current competition year. Cross Entry: Riders: Riders may not cross enter into any class or section at the same competition where fences exceed 2'9" Fence Height: • 2'6"

110. Low Adult Amateur Hunter Over Fences  
111. Low Adult Amateur Hunter Over Fences  
112. Low Adult Amateur Hunter Over Fences  
113. Low Adult Amateur Hunter Under Saddle

### **OPPORTUNITY JUNIOR AMATEUR 2' HUNTER**

Fences 2'0". Riders are not permitted to cross enter into any rated PHA divisions

114. Opportunity Jr/Am- Hunter 2' Over Fences  
115. Opportunity Jr/Am- Hunter 2' Over Fences  
116. Opportunity Jr/Am- Hunter 2' Over Fences  
117. Opportunity Jr/Am Hunter Under Saddle

## BLUE-RED HUNTER

ENTRY FEE: \$40.00 PER TRIP

Time Will Determine If Multiple Trips Will Be Permitted Each Day Fence Heights Will Be Set In Accordance With The Division That Follows Cards Will Remain Open All Day Except As Noted Or Announced

- 118. Blue-Red Hunter - Fences 2'-3'6"
- 119. Blue-Red Hunter - Fences 2'-3'6"
- 120. Blue-Red Hunter - Fences 2'-2'6"
- 121. Opportunity Blue-Red Hunter - Fences 2'2'6"



## EQUITATION CLASSES

ENTRY FEE: \$40.00 PER CLASS

- 122. M&S U.S. Pony Medal - 2'3", 2'6", 2'9"
- 123. Syracuse PHA Small-Medium Pony Medal - 2'
- 124. Syracuse PHA Large Pony Medal - 2'6"
- 125. Syracuse PHA 3' Medal - 14 Years & Under - 3'
- 126. Syracuse PHA 3' Medal - 15-17 Years- 3'
- 127. Syracuse PHA 3' Adult Medal - 18-35 Years
- 128. Syracuse PHA 3' Adult Medal - 36 & Over
- 129. Syracuse PHA Paterson Junior Medal - 3'3"/3'6"
- 130. Dover Saddlery/US National Hunter Seat Medal
- 131. NHSAA/ASPCA Horsemanship
- 132. Syracuse PHA Low-Children's Medal - 2'6"
- 133. Syracuse PHA Low-Children's Pony Medal - 2'
- 134. Syracuse PHA Low-Adult Medal - 2'6"

## SATURDAY SECTIONS - NOT USEF RATED

### LEVEL 1 HUNTER

- 150. Level 1 Hunter - 2'
- 151. Level 1 Hunter - 2'
- 152. Level 1 Hunter - 2'
- 153. Level 1 Hunter Under Saddle

### LEVEL 2 HUNTER

- 154. Level 2 Hunter - 2'3"
- 155. Level 2 Hunter - 2'3"
- 156. Level 2 Hunter - 2'3"
- 157. Level 2 Hunter Under Saddle

### LEVEL 3 HUNTER

- 158. Level 3 Hunter - 2'6"
- 159. Level 3 Hunter - 2'6"
- 160. Level 3 Hunter - 2'6"
- 161. Level 3 Hunter Under Saddle

### LEVEL 4 HUNTER

- 161. Level 4 Hunter - 2'9"/3'
- 162. Level 4 Hunter - 2'9"/3'
- 163. Level 4 Hunter - 2'9"/3'
- 164. Level 4 Hunter Under Saddle

### SYRACUSE PHA THOROUGHBRED HUNTER

- 165. Syracuse PHA Thoroughbred Hunter 2'6 & 2'9
- 166. Syracuse PHA Thoroughbred Hunter 2'6 & 2'9
- 167. Syracuse PHA Thoroughbred Hunter 2'6 & 2'9
- 168. Syracuse PHA Thoroughbred Hunter U/S
- 170. Blue-Red Hunter - Fences 2' - 3'

### SHORT STIRRUP HUNTER

To be shown over fences not to exceed 2' by beginning junior riders who have not previously shown over 2'. Riders may not cross enter into any other PHA rated divisions or classes where fences exceed 2'. Fences Not To Exceed 18"

- 180. Short Stirrup Hunter Over Fences
- 181. Short Stirrup Hunter Over Fences
- 182. Short Stirrup Hunter Over Fences
- 183. Short Stirrup Hunter Under Saddle

### SHORT STIRRUP EQUITATION

- 184. Short Stirrup Equitation Over Fences
- 185. Short Stirrup Equitation Over Fences
- 186. Short Stirrup Equitation Over Fences
- 187. Short Stirrup Equitation W-T-C

### LOW & SLOW HUNTER

Open to beginner riders of any age on horses or ponies. Riders may not show in any other division except Short Stirrup. To trot or canter. Fences from 1'.

- 188. Low & Slow Hunter Over Fences
- 189. Low & Slow Hunter Over Fences
- 190. Low & Slow Hunter Over Fences
- 191. Low & Slow Hunter Under Saddle

### WALK - TROT

Open to beginner riders of any age on horses or ponies. Riders not eligible for any other classes at this show.

- 192. Walk - Trot Equitation
- 193. Walk - Trot Pleasure
- 194. Walk - Trot Equitation Over Poles

## JUMPER SECTIONS - NOT USEF RATED

- 200. .70m Jumper, Table II, Section 2.1
- 201. .70m Jumper, Table II, Section 2.2B
- 202. .70m Jumper, Table II, Section 2.2B

- 203. .80m Jumper, Table II, Section 2.1
- 204. .80m Jumper, Table II, Section 2.2B
- 205. .80m Jumper, Table II, Section 2.2B

- 206. .90m Jumper, Table II, Section 2.1
- 207. .90m Jumper, Table II, Section 2.2B
- 208. .90m Jumper, Table II, Section 2.2B

- 209. 1.10m Jumper, Table II, Section 2.1
- 210. 1.10m Jumper, Table II, Section 2.2B
- 211. 1.10m Jumper, Table II, Section 2.2B

### Junior/Amateur Jumper - 1.0m

- 212. Junior/Amateur Jumper - 1.0m
- 213. Junior/Amateur Jumper - 1.0m
- 214. Junior/Amateur Jumper - 1.0m



## Saturday 8am

170. Blue-Red Hunter - Fences 2' - 3'
150. Level 1 Hunter - 2'
151. Level 1 Hunter - 2'
152. Level 1 Hunter - 2'
153. Level 1 Hunter Under Saddle
154. Level 2 Hunter - 2'3"
155. Level 2 Hunter - 2'3"
156. Level 2 Hunter - 2'3"
157. Level 2 Hunter Under Saddle
158. Level 3 Hunter - 2'6"
159. Level 3 Hunter - 2'6"
160. Level 3 Hunter - 2'6"
161. Level 3 Hunter Under Saddle
165. Syracuse PHA Thoroughbred Hunter 2'6 & 2'9
166. Syracuse PHA Thoroughbred Hunter 2'6 & 2'9
167. Syracuse PHA Thoroughbred Hunter 2'6 & 2'9
168. Syracuse PHA Thoroughbred Hunter U/S
161. Level 4 Hunter - 2'9"/3'
162. Level 4 Hunter - 2'9"/3'
163. Level 4 Hunter - 2'9"/3'
164. Level 4 Hunter Under Saddle
188. Low & Slow Hunter Over Fences
189. Low & Slow Hunter Over Fences
190. Low & Slow Hunter Over Fences
191. Low & Slow Hunter Under Saddle
180. Short Stirrup Hunter Over Fences
181. Short Stirrup Hunter Over Fences
182. Short Stirrup Hunter Over Fences
183. Short Stirrup Hunter Under Saddle
184. Short Stirrup Equitation Over Fences
185. Short Stirrup Equitation Over Fences
186. Short Stirrup Equitation Over Fences
187. Short Stirrup Equitation W-T-C
192. Walk - Trot Equitation
193. Walk - Trot Pleasure
194. Walk - Trot Equitation Over Poles
195. Leadline
200. .70m Jumper, Table II, Section 2.1
201. .70m Jumper, Table II, Section 2.2B
202. .70m Jumper, Table II, Section 2.2B
203. .80m Jumper, Table II, Section 2.1
204. .80m Jumper, Table II, Section 2.2B
205. .80m Jumper, Table II, Section 2.2B
206. .90m Jumper, Table II, Section 2.1
207. .90m Jumper, Table II, Section 2.2B
208. .90m Jumper, Table II, Section 2.2B
212. Junior/Amateur Jumper - 1.0m
213. Junior/Amateur Jumper - 1.0m
214. Junior/Amateur Jumper - 1.0m
209. 1.10m Jumper, Table II, Section 2.1
210. 1.10m Jumper, Table II, Section 2.2B
211. 1.10m Jumper, Table II, Section 2.2B

**Sunday 8AM**

- 118. Blue-Red Hunter - Fences 2'-3'6"
- 25. USHJA 2' Hunter
- 26. USHJA 2' Hunter
- 27. USHJA 2' Hunter
- 28. USHJA 2' Hunter Under Saddle
- 21. USHJA 2'3" Hunter
- 22. USHJA 2'3" Hunter
- 23. USHJA 2'3" Hunter
- 24. USHJA 2'3" Hunter Under Saddle
- 17. USHJA 2'6" Hunter
- 18. USHJA 2'6" Hunter
- 19. USHJA 2'6" Hunter
- 20. USHJA 2'6" Hunter Under Saddle
- 1. Baby Green Hunter Over Fences
- 2. Baby Green Hunter Over Fences
- 3. Baby Green Hunter Over Fences
- 4. Baby Green Hunter Under Saddle
- 13. USHJA 2'9" Hunter
- 14. USHJA 2'9" Hunter
- 15. USHJA 2'9" Hunter
- 16. USHJA 2'9" Hunter Under Saddle
- 5. USHJA 3' Hunter Over Fences
- 6. USHJA 3' Hunter Over Fences
- 7. USHJA 3' Hunter Over Fences
- 8. USHJA 3' Hunter Under Saddle
- 98. Thoroughbred Hunter Over Fences
- 99. Thoroughbred Hunter Over Fences
- 100. Thoroughbred Hunter Over Fences
- 101. Thoroughbred Hunter Under Saddle
- 9. Green Hunter Over Fences
- 10. Green Hunter Over Fences
- 11. Green Hunter Over Fences
- 12. Green Hunter Under Saddle
- 94. Performance Hunter 3'3" Over Fences
- 95. Performance Hunter 3'3" Over Fences
- 96. Performance Hunter 3'3" Over Fences
- 97. Performance Hunter 3'3" Under Saddle
- 129. Syracuse PHA Paterson Junior Medal - 3'3"/3'6"
- 37. Large Junior Hunter 3'3"
- 38. Large Junior Hunter 3'3"
- 39. Large Junior Hunter 3'3" *\*Handy*
- 40. Large Junior Hunter 3'3" Under Saddle
- 41. Small Junior Hunter 3'3"
- 42. Small Junior Hunter 3'3"
- 43. Small Junior Hunter 3'3" *\*Handy*
- 44. Small Junior Hunter 3'3" Under Saddle
- 45. 3'3" Amateur-Owner Hunter Over Fences
- 46. 3'3" Amateur-Owner Hunter Over Fences
- 47. 3'3" Amateur-Owner Hunter Over Fences *\*Handy*
- 48. 3'3" Amateur-Owner Hunter Under Saddle
- 130. Dover Saddlery/US National Hunter Seat Medal
- 131. NHSAA/ASPCA Horsemanship
- 29. Large Junior Hunter 3'6"
- 30. Large Junior Hunter 3'6"
- 31. Large Junior Hunter 3'6" *\*Handy*
- 32. Large Junior Hunter 3'6" Under Saddle
- 33. Small Junior Hunter 3'6"
- 34. Small Junior Hunter 3'6"
- 35. Small Junior Hunter 3'6" *\*Handy*
- 36. Small Junior Hunter 3'6" Under Saddle
- 49. 3'6" Amateur-Owner Hunter Over Fences
- 50. 3'6" Amateur-Owner Hunter Over Fences
- 51. 3'6" Amateur-Owner Hunter Over Fences *\*Handy*
- 52. 3'6" Amateur-Owner Hunter Under Saddle
- 127. Syracuse PHA 3' Adult Medal - 18-35 Years
- 53. Adult-Amateur Hunter Over Fences - 18-35
- 54. Adult-Amateur Hunter Over Fences - 18-35
- 56. Adult-Amateur Hunter Over Fences - 18-35
- 57. Adult-Amateur Hunter Under Saddle - 18-35
- 128. Syracuse PHA 3' Adult Medal - 36 & Over
- 58. Adult-Amateur Hunter Over Fences - 36 & Over
- 59. Adult-Amateur Hunter Over Fences - 36 & Over
- 60. Adult-Amateur Hunter Over Fences - 36 & Over
- 61. Adult-Amateur Hunter Under Saddle - 36 & Over
- 125. Syracuse PHA 3' Medal - 14 Years & Under - 3'
- 62. Children's Hunter Over Fences - 14 & Under
- 63. Children's Hunter Over Fences - 14 & Under
- 64. Children's Hunter Over Fences - 14 & Under
- 65. Children's Hunter Under Saddle - 14 & Under
- 126. Syracuse PHA 3' Medal - 15-17 Years- 3'
- 66. Children's Hunter Over Fences - 15-17
- 67. Children's Hunter Over Fences - 15-17
- 68. Children's Hunter Over Fences - 15-17
- 69. Children's Hunter Under Saddle - 15-17
- 119. Blue-Red Hunter - Fences 2'-3'6"
- 123. Syracuse PHA Small-Medium Pony Medal - 2'
- 70. Children's Hunter Small/Med Pony Over Fences
- 71. Children's Hunter Small/Med Pony Over Fences
- 72. Children's Hunter Small/Med Pony Over Fences
- 73. Children's Hunter Small/Med Pony Under Saddle
- 124. Syracuse PHA Large Pony Medal - 2'6"
- 74. Children's Hunter Large Pony Over Fences
- 75. Children's Hunter Large Pony Over Fences
- 76. Children's Hunter Large Pony Over Fences
- 77. Children's Hunter Large Pony Under Saddle
- 121. Opportunity Blue-Red Hunter - Fences 2'2'6"
- 134. Syracuse PHA Low-Adult Medal - 2'6"
- 110. Low Adult Amateur Hunter Over Fences
- 111. Low Adult Amateur Hunter Over Fences
- 112. Low Adult Amateur Hunter Over Fences
- 113. Low Adult Amateur Hunter Under Saddle
- 132. Syracuse PHA Low-Children's Medal - 2'6"
- 102. Low Childrens Hunter Horses Over Fences
- 103. Low Childrens Hunter Horses Over Fences
- 104. Low Childrens Hunter Horses Over Fences
- 105. Low Childrens Hunter Horses Under Saddle
- 133. Syracuse PHA Low-Children's Pony Medal - 2'
- 106. Low Childrens Hunter Pony Over Fences
- 107. Low Childrens Hunter Pony Over Fences
- 108. Low Childrens Hunter Pony Over Fences
- 109. Low Childrens Hunter Pony Under Saddle
- 114. Opportunity Jr/Am- Hunter 2' Over Fences
- 115. Opportunity Jr/Am- Hunter 2' Over Fences
- 116. Opportunity Jr/Am- Hunter 2' Over Fences
- 117. Opportunity Jr/Am Hunter Under Saddle
- 120. Blue-Red Hunter - Fences 2'-2'6"
- 90. Green Pony Hunter Over Fences
- 91. Green Pony Hunter Over Fences
- 92. Green Pony Hunter Over Fences
- 93. Green Pony Hunter Under Saddle
- 122. M&S U.S. Pony Medal - 2'3", 2'6", 2'9"
- 78. Small Pony Hunter Over Fences
- 79. Small Pony Hunter Over Fences
- 80. Small Pony Hunter Over Fences *\*Handy*
- 81. Small Pony Hunter Under Saddle
- 82. Medium Pony Hunter Over Fences
- 83. Medium Pony Hunter Over Fences
- 84. Medium Pony Hunter Over Fences *\*Handy*
- 85. Medium Pony Hunter Under Saddle
- 86. Large Pony Hunter Over Fences
- 87. Large Pony Hunter Over Fences
- 88. Large Pony Hunter Over Fences *\*Handy*
- 89. Large Pony Hunter Under Saddle

# SPRING INTO APRIL

Saturday, April 13 **NOT USEF RATED** Only One Owner Per Entry Form

ENTRY #	HORSES' NAMES	ENTRY FEES	RIDERS' NAMES
	(Write Class Numbers below Names)		
	<b>EMT/Insurance - \$35.00 per horse</b>		<b>RETURN TO:</b> <b>Spring into April</b> PO Box 455 Fayetteville, N.Y. 13066 eqpmliz@gmail.com
	<b>Stall - \$90.00</b>		

***Photo-copied entry blanks gratefully accepted***

This entry constitutes an agreement that the party making it, along with the owner, lessee, trainer, manager, agent, coach, driver, rider, and the horse connected thereto, shall accept and abide by the rules of the show, that every horse, rider, and/or driver is eligible as entered, that they will accept as final any ruling of the show management with respect to their conduct, and that each entry agrees to defend and hold the SPRING INTO APRIL HORSE SHOW, the show and any of their officials, directors, employees and agents, or other entities providing facilities or equipment for the show harmless from any claim, action, or suit for injury or loss, property damage or death sustained during or in connection with participation in the show, whether or not such injury or loss resulted, directly or indirectly, from the negligent acts or omissions of said staff, officials, directors, employees or agents of the show.

PLEASE COMPLETE ALL RIDER INFORMATION
RIDER Name
Street Address
City, State, Zip
Telephone Number
EMAIL

PLEASE COMPLETE ALL OWNER INFORMATION
Owner Name
Street Address
City, State, Zip
Telephone Number
EMAIL

PLEASE COMPLETE ALL TRAINER INFORMATION
Trainer Name
Street Address
City, State, Zip
Telephone Number
EMAIL

# Spring into April April 14, 2024

NAME OF HORSE	Sex	Color	Age	Height	Horse's USEF/USHJA #

<b>Write Class #s Below Name of Corresponding Rider</b>	<input type="checkbox"/> <b>Rider's USEF #</b> <input type="checkbox"/>
Name of Rider:	
<b>Write Class #s Below Name of Corresponding Rider</b>	<input type="checkbox"/> <b>Rider's USEF #</b> <input type="checkbox"/>
Name of Rider:	

<p><b>MAKE CHECKS PAYABLE TO: EQUINE PRODUCTIONS &amp; MARKETING</b></p> <p>Return To: Spring into April P.O. Box 455, Fayetteville, NY, 13066 eqpmliz@gmail.com</p>	EMT/Insurance - \$35.00 per horse	\$35
	Box Stall - @ \$90.00	\$90
	USEF Fee (D&M \$8, USEF \$15)	\$23
	USHJA Zone Fee @ \$7 per horse	\$2

<b>Print Rider's Name</b>		
Street		
City	State	Zip
Telephone	USEF #	
Rider Email		

<b>Print Trainer's Name</b>		
Street		
City	State	Zip
Telephone	USEF #	
Trainer Email		

<b>Print Owner's Name</b>		
Street		
City	State	Zip
Telephone	USEF #	
Owner Email		

## FEDERATION ENTRY AGREEMENT

By entering a Federation-licensed Competition and signing this entry blank as the Owner, Lessee, Trainer, Manager, Agent, Coach, Driver, Rider, Handler, Vaultor or Longeur and on behalf of myself and my principals, representatives, employees and agents, I agree that I am subject to the Bylaws and Rules of the United States Equestrian Federation, Inc. (the "Federation") and the local rules of Syracuse PHA Horse Show (Competition). I agree to be bound by the Bylaws and Rules of the Federation and of the competition. I will accept as final the decision of the Hearing Committee on any question arising under the Rules, and agree to release and hold harmless the competition, the Federation, their officials, directors and employees for any action taken under the Rules. I represent that I am eligible to enter and/or participate under the Rules, and every horse I am entering is eligible as entered. I also agree that as a condition of and in consideration of acceptance of entry, the Federation and/or the Competition may use or assign photographs, videos, audios, cable-casts, broadcasts, internet, film, new media or other likenesses of me and my horse taken during the course of the competition for the promotion, coverage or benefit of the competition, sport, or the Federation. Those likenesses shall not be used to advertise a product and they may not be used in such a way as to jeopardize amateur status. I hereby expressly and irrevocably waive and release any rights in connection with such use, including any claim to compensation, invasion of privacy, right of publicity, or to misappropriation. The construction and application of Federation rules are governed by the laws of the State of New York, and any action instituted against the Federation must be filed in New York State. See GR908.4. If not currently a USEF Active Competing member or Subscriber, I acknowledge that I will be enrolled for no cost as a USEF Fan and my USEF Fan Account will continue to annually automatically renew in USEF's sole discretion. Additionally, I acknowledge that the benefits of a USEF Fan are subject to change without notice. USEF may in its sole discretion, at any time, terminate my USEF Fan status. I acknowledge that I may opt out at any time by going to MyUSEF Dashboard or calling (859) 810-8733.

**BY SIGNING BELOW, I AGREE** that I have read, understand, and agree to be bound by all applicable Federation Bylaws, rules, and policies including the USEF Safe Sport Policy and Minor Athlete Abuse Prevention Policies (MAAPP) as published at [www.usef.org](http://www.usef.org), as amended from time to time, as well as all terms and provisions of this Prize List. If I am signing and submitting this Agreement electronically, I acknowledge that my electronic signature shall have the same validity, force and effect as if I affixed my signature by my own hand.

**RIDER/DRIVER/HANDLER/VAULTER/LONGEUR (mandatory)**  
 Signature: \_\_\_\_\_  
 Print Name: \_\_\_\_\_

**OWNER/AGENT (mandatory)**  
 Signature: \_\_\_\_\_  
 Print Name: \_\_\_\_\_

**TRAINER (mandatory)**  
 Signature: \_\_\_\_\_  
 Print Name: \_\_\_\_\_

**COACH**  
 Signature: \_\_\_\_\_  
 Print Name: \_\_\_\_\_

Parent/Guardian Signature: (Required if Rider/Driver/Handler/Vaultor/Longeur is a minor) \_\_\_\_\_

Print Parent//Guardian Name: \_\_\_\_\_

Emergency Contact Phone No. \_\_\_\_\_

Is Rider/Driver/Vaultor a U.S. Citizen: \_\_ Yes \_\_ No





# WAIVER AND RELEASE OF LIABILITY, ASSUMPTION OF RISK AND INDEMNITY AGREEMENT

For and in consideration of United States Equestrian Federation, Inc. dba US Equestrian ("USEF") allowing me, the undersigned, to participate in any capacity (including as a rider, driver, handler, vaulter, longeur, lessee, owner, agent, coach, official, trainer or volunteer) in a USEF sanctioned, licensed or approved event or activity, including but not limited to equestrian clinics, practices, shows, competitions and related or incidental activities and Spring into April ("USEF Event" or "USEF Events"); I, for myself, and on behalf of my spouse, children, heirs and next of kin, and any legal and personal representatives, executors, administrators, successors, and assigns, hereby agree to and make the following contractual representations pursuant to this Agreement (the "Agreement"):

A. RULES AND REGULATIONS: I hereby agree that I have read, understand, and agree to be bound by all applicable Federation Bylaws, rules, and policies including the USEF Safe Sport Policy and Minor Athlete Abuse Prevention Policies (MAAPP) as published at www.usef.org, as amended from time to time.

B. ACKNOWLEDGMENT OF RISK: I knowingly, willingly, and voluntarily acknowledge the inherent risks associated with the sport of equestrian and know that horseback riding and related equestrian activities are inherently dangerous, and that participation in any USEF Event involves risks and dangers including, without limitation, the potential for serious bodily injury (including broken bones, head or neck injuries), sickness and disease (including communicable diseases), trauma, pain & suffering, permanent disability, paralysis and death; loss of or damage to personal property (including my mount & equipment) arising out of the unpredictable behavior of horses; exposure to extreme conditions and circumstances; accidents involving other participants, event staff, volunteers or spectators; contact or collision with other participants and horses, natural or manmade objects; adverse weather conditions; facilities issues and premises conditions; failure of protective equipment (including helmets); inadequate safety measures; participants of varying skill levels; situations beyond the immediate control of the USEF Event organizers and competition management; and other undefined, not readily foreseeable and presently unknown risks and dangers ("Risks").

### WARNING:

**HORSEBACK RIDING AND EQUINE ACTIVITIES CAN BE DANGEROUS. RIDE AT YOUR OWN RISK. Under the laws New York, an equine activity sponsor or equine professional may not liable for any injury to, or the death of, a participant in equine activities resulting from the inherent risks of equine activities. See SECTION 18-301-303 OF THE GENERAL OBLIGATIONS LAW.**

C. ASSUMPTION OF RISK: I understand that the aforementioned Risks may be caused in whole or in part or result directly or indirectly from the negligence of my own actions or inactions, the actions or inactions of others participating in the USEF Events, or the negligent acts or omissions of the Released Parties defined below, and I hereby voluntarily and knowingly assume all such Risks and responsibility for any damages, liabilities, losses, or expenses that I incur as a result of my participation in any USEF Events. I also agree to be responsible for any injury or damage caused by me, my horse, my employees or contractors under my direction and control at any USEF Event.

D. WAIVER AND RELEASE OF LIABILITY, HOLD HARMLESS AND INDEMNITY: In conjunction with my participation in any USEF Event, I hereby release, waive and covenant not to sue, and further agree to indemnify, defend and hold harmless the following parties: USEF, USEF Recognized Affiliate Associations, the United States Olympic & Paralympic Committee (USOPC), USEF clubs, members, Event participants (including athletes/riders, coaches, trainers, judges/officials, and other personnel), the Event owner, licensee, and competition managers; the promoters, sponsors, or advertisers of any USEF Event; any charity or other beneficiary which may benefit from the USEF Event; the owners, managers, or lessors of any facilities or premises where a USEF Event may be held; and all directors, officers, employees, agents, contractors, and volunteers of any of the aforementioned parties (**Individually and Collectively, the "Released Parties" or "Event Organizers"**), with respect to any liability, claim(s), demand(s), cause(s) of action, damage(s), loss, or expense (including court costs and reasonable attorney fees) of any kind or nature ("**Liability**") which may arise out of, result from, or relate in any way to my participation in the USEF Events, including claims for Liability caused in whole or in part by the negligent acts or omissions of the Released Parties.

E. COMPLETE AGREEMENT AND SEVERABILITY CLAUSE: This Agreement represents the complete understanding between the parties regarding these issues and no oral representations, statements or inducements have been made apart from this Agreement. If any provision of this Agreement is held to be unlawful, void, or for any reason unenforceable, then that provision shall be deemed severable from this Agreement and shall not affect the validity and enforceability of any remaining provisions.

**I HAVE CAREFULLY READ THIS DOCUMENT IN ITS ENTIRETY, UNDERSTAND ALL OF ITS TERMS AND CONDITIONS, AND KNOW IT CONTAINS AN ASSUMPTION OF RISK, RELEASE AND WAIVER FROM LIABILITY, AS WELL AS A HOLD HARMLESS AND INDEMNIFICATION OBLIGATIONS.**

By signing below, that I have read, understand, and agree to be bound by all applicable Federation Bylaws, rules, and policies including the USEF Safe Sport Policy and Minor Athlete Abuse Prevention Policies (MAAPP) as published at www.usef.org, as amended from time to time, as well as all terms and provisions of this Prize List. If, despite this Agreement, I, or anyone on my behalf or the minor's behalf, makes a claim for Liability against any of the Released Parties, I will indemnify, defend and hold harmless each of the Released Parties from any such Liabilities as the result of such claim.

**The parties agree that this agreement may be electronically signed. The parties agree that the electronic signatures appearing on this agreement are the same as handwritten signatures for the purposes of validity, enforceability, and admissibility.**

RIDER/DRIVER/HANDLER/VAULTER/LONGEUR  OWNER  TRAINER  OFFICIAL  STAFF  VOLUNTEER  COACH (IF APPLICABLE)

Signature: \_\_\_\_\_ Date: \_\_\_\_\_ Print Name: \_\_\_\_\_

Parent/Guardian Signature: (Required if Rider/Driver/Handler/Vaulter/Longeur is a minor) \_\_\_\_\_ Date: \_\_\_\_\_

Print Parent//Guardian Name: \_\_\_\_\_ Emergency Contact Phone No. \_\_\_\_\_

11.16.23